

TECSOUND®

Description

TECSOUND® is a bitumen-free, synthetic membrane based on a high-density polymer.

The upper surface is provided with a non-woven polypropylene reinforcement fleece which also at the same time offers protection.

TECSOUND® is applied as sound-insulation against airborne (traffic, etc.) and impact noise (precipitation, etc.) on light roof structures.

Packing & Storage

	TECSOUND® 35	TECSOUND® 50	TECSOUND® 70	TECSOUND® 100
Mass (kg/m ²)	3,5	5,0	7,0	10,0
Thickness (mm)	1,75	2,5	3,5	5,0
Length of the roll (m)	8	6	5	4
Width of the roll (m)		1,22		1,20
Rolls/pallet		24		21
m ² /pallet	234,2	175,6	146,4	100,8

Store the rolls horizontally on a pallet protected against moisture, sunlight and heat at a temperature ≤ +35 °C. Do not stack the pallets on top of each other. The rolls have a shelf life of 1 year.

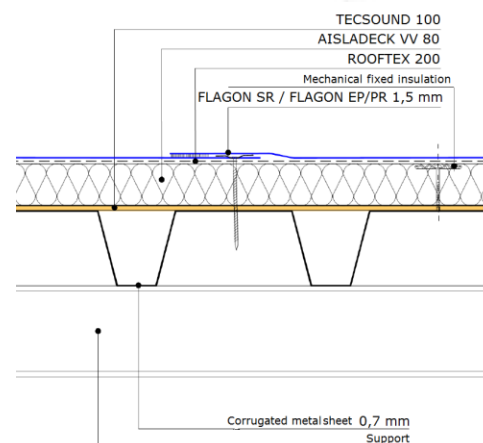
Characteristics

Foldability (°C) (EN 1109)		-20
Tensile force (N/50 mm) (NT-67)		≥ 30
Elongation (%) (NT-67)		≥ 500
Resistance to tearing (nail shank) (N) (EN 12310-1)		153 - 235
Reaction to fire (EN 13501-1)		Bs2d0
Young module (MPa)		DM - 1,35637 DT - 1,1744
Poisson coefficient		0,23
Water vapour diffusion-equivalent (m) (EN 1931)	1,75 mm 2,5 mm 3,5 mm 5,0 mm	3 4 6 9

Sound reduction:

Frequency (Hz)	R _(with TECSOUND 100) (dB)	R _(without TECSOUND 100) (dB)
125	23,7	16,4
250	24,2	15,3
500	29,2	23,2
1000	35,4	25,0
2000	43,4	30,3
4000	54,6	39,7
R _A (weighted acoustic reduction index)	33 dBA	25 dBA
R _W (acoustic reduction index)	34 dB	26 dB

Testing following EN 140-3: 1995



Installation

The membrane is installed fleece upwards in a mechanically fixed or ballasted waterproofing system with an overlap of at least 5 cm. It is placed between the vapor barrier (if applicable) and the insulation.
In case of steel deck roofing, the membrane must be applied perpendicular to the direction of the deck.
In case of a mechanically fixed system, the insulation must be mechanically fixed.
The overlaps must be thoroughly sealed (adhesive tape) as openings reduce the reduction level of the noise.

Special indications

Hygiene, Health and Environment

The product does not contain any substance which is likely to be detrimental to your health or to the environment and complies with generally admitted Health and Safety Requirements.

Quality-, Environment- and Safety Management

SOPREMA always recognises as a high level of importance the quality of the products, the environment and safety. For this reason, we operate independently monitored Quality and Environment Assurance Systems in line with **EN ISO 9001** and **EN ISO 14001**.